

Condensing unit  
Voltage Code : FZ

# CAJN9510ZMHR-FZ

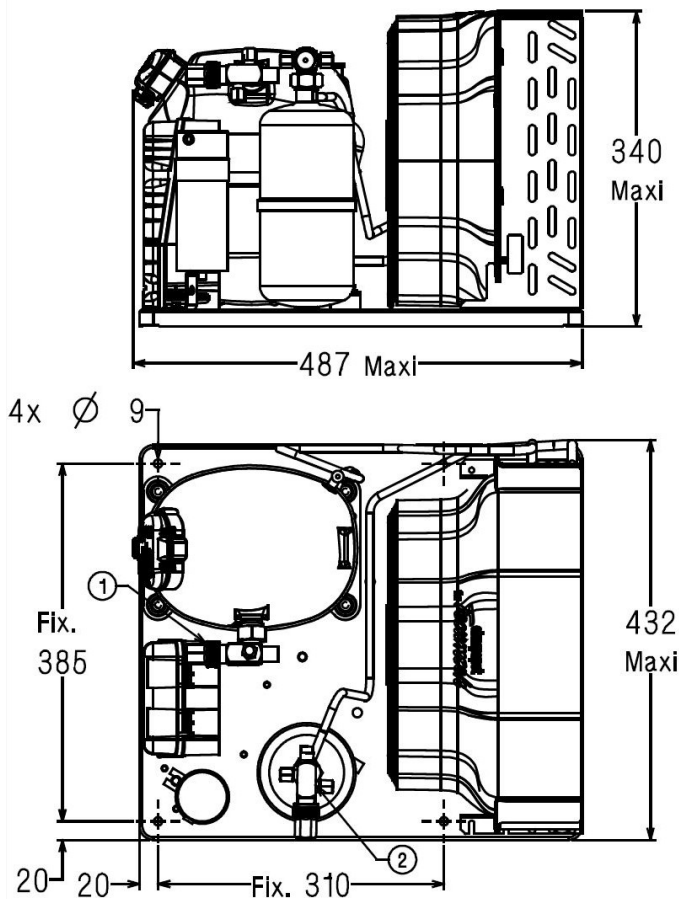
High Temp. Commercial (MHP)

220 - 240V 1~ 50 Hz

R452A / R404A / R448A / R449A

CAJN9510ZMHR-FZ

Conditions	Frequency	Nominal Cooling Capacity		Sound Power ISO3745 / ISO 3743-1
		Watts	BTU/h	
EN13215 / R452A	50 Hz	1389	4737	65 dBA
EN13215 / R404A	50 Hz	1455	4962	65 dBA
EN13215 / R448A	50 Hz	1278	4359	65 dBA
EN13215 / R449A	50 Hz	1279	4361	65 dBA



<b>Net Weight (Kg)</b>	33.0
<b>Expansion device</b>	Expansion_Valve
<b>Air Flow (m³/h)</b>	900
<b>Compo Data Sheet</b>	224ET-FZ
<b>Elec Comp Type</b>	CSR
<b>Current (Amp)</b>	
Load Rated Amp	5.6
Max Cont Current	8.6
Lock Rotor Amp	30
<b>Fan</b>	
Speed (rpm)	1200
Power (W)	30.0
Diameter (mm)	300
Protection	Overload
IP Level	IP54
<b>Condenser</b>	300/3900
<b>Liquid Receiver</b>	
Capacity (L)	1.5
Maximum Pressure (Bars)	32.0
<b>Suction Line</b>	
Suction Type	Vanne Orientable
For Tubing Out Diam	15.9 (5/8")
Suction Connection Type	Brased
<b>Liquid Line</b>	
Liquid Line Type	Vanne Orientable
For Tubing Out Diam	9.5 (3/8")
Liquid Connecton Type	Brased
<b>Connection Type</b>	VR
<b>Fan Guard</b>	maille < à 8mm

\* EN13215 : T°Ambient 32.0°C / T°Evap. -10.0°C / T°Return gas temp.. 20.0°C  
T°Subcooling. 3.0K

Note : Tecumseh reserves the right to change information contained in this document without notification.



**Tecumseh**

<b>CAJN9510ZMHR-FZ</b>	<b>Tension FZ : 220 - 240V 1~ 50 Hz</b>
------------------------	---

Les performances sont données dans les <b>conditions EN13215</b> :	Gaz aspirés :	20.0 °C
Condition Dew	Sous refroidissement :	3.0 K
The performance data are in <b>EN13215 conditions</b> :	Return gas :	20.0 °C
Dew Condition	Subcooling :	3.0 K

<b>50 Hz R452A</b>											
											<b>N°6290</b>
5   T ambience	6   T évaporation	(°C)	<b>-25</b>	<b>-20</b>	<b>-15</b>	<b>-10</b>	<b>-5</b>	<b>0</b>	<b>5</b>	<b>10</b>	<b>15</b>
<b>25</b>	1   P frigorifique	(Watt)	830	1046	1288	1554	1843	2150	2471	2802	3140
	2   P absorbée	(W)	590	663	739	820	906	998	1096	1202	1317
	3   I absorbée	(A)	2.92	3.24	3.58	3.94	4.34	4.77	5.23	5.74	6.29
	4   Tc	(°C)	31.5	33.7	36.0	38.4	40.9	43.6	46.3	49.2	52.2
<b>32</b>	1   P frigorifique	(Watt)	723	925	1148	1389	1647	1919	2201	2491	2787
	2   P absorbée	(W)	594	674	758	846	940	1040	1146	1261	1384
	3   I absorbée	(A)	2.91	3.27	3.65	4.05	4.49	4.95	5.46	6.00	6.58
	4   Tc	(°C)	37.4	39.5	41.7	44.0	46.4	48.9	51.5	54.3	57.1
<b>43</b>	1   P frigorifique	(Watt)		731	924	1126	1336	1554	1778		
	2   P absorbée	(W)		682	778	879	986	1100	1220		
	3   I absorbée	(A)		3.28	3.73	4.20	4.70	5.23	5.78		
	4   Tc	(°C)		48.7	50.7	52.8	55.0	57.4	59.8		

<b>50 Hz R404A</b>											
											<b>N°5049</b>
5   T ambience	6   T évaporation	(°C)	<b>-25</b>	<b>-20</b>	<b>-15</b>	<b>-10</b>	<b>-5</b>	<b>0</b>	<b>5</b>	<b>10</b>	<b>15</b>
<b>25</b>	1   P frigorifique	(Watt)	902	1120	1363	1629	1913	2211	2518	2829	3139
	2   P absorbée	(W)	624	697	775	855	941	1031	1126	1229	1338
	3   I absorbée	(A)	3.09	3.41	3.75	4.11	4.50	4.92	5.38	5.87	6.40
	4   Tc	(°C)	34.3	36.5	38.7	41.1	43.5	46.1	48.7	51.4	54.3
<b>32</b>	1   P frigorifique	(Watt)	789	993	1216	1455	1707	1969	2235	2503	2769
	2   P absorbée	(W)	632	712	796	885	977	1075	1179	1289	1406
	3   I absorbée	(A)	3.09	3.45	3.83	4.23	4.66	5.12	5.61	6.13	6.69
	4   Tc	(°C)	40.1	42.1	44.2	46.5	48.8	51.2	53.7	56.3	58.9
<b>43</b>	1   P frigorifique	(Watt)		790	982	1180	1383	1588	1793		
	2   P absorbée	(W)		727	823	924	1029	1140	1256		
	3   I absorbée	(A)		3.49	3.94	4.41	4.90	5.41	5.96		
	4   Tc	(°C)		51.0	52.9	54.9	57.0	59.2	61.4		

1 = cooling capacity 2 = power input 3 = current 4 = condensing temperature 5 = ambient temperature 6 = evaporating temperature

Nota : Tecumseh se réserve le droit de modifier les informations contenues dans ce document sans préavis.

Note : Tecumseh reserves the right to change information contained in this document without notification.

© 2021 Tecumseh Products Company  
All rights reserved



**Tecumseh**

<b>CAJN9510ZMHR-FZ</b>	<b>Tension FZ : 220 - 240V 1~ 50 Hz</b>
------------------------	---

Les performances sont données dans les <b>conditions EN13215</b> :	Gaz aspirés :	20.0 °C
Condition Dew	Sous refroidissement :	3.0 K
The performance data are in <b>EN13215 conditions</b> :	Return gas :	20.0 °C
Dew Condition	Subcooling :	3.0 K

<b>50 Hz R448A (*)</b>											
											<b>N°6980</b>
5   T ambience	6   T évaporation	(°C)	<b>-25</b>	<b>-20</b>	<b>-15</b>	<b>-10</b>	<b>-5</b>	<b>0</b>	<b>5</b>	<b>10</b>	<b>15</b>
<b>25</b>	1   P frigorifique	(Watt)		917	1155	1422	1716	2037	2383	2753	3143
	2   P absorbée	(W)		626	700	780	866	959	1060	1169	1287
	3   I absorbée	(A)		3.06	3.39	3.75	4.15	4.58	5.06	5.58	6.14
	4   Tc	(°C)		34.1	36.4	38.8	41.4	44.0	46.8	49.7	52.7
<b>32</b>	1   P frigorifique	(Watt)			1033	1278	1547	1838	2151	2486	
	2   P absorbée	(W)			719	807	901	1003	1113	1231	
	3   I absorbée	(A)			3.46	3.87	4.31	4.78	5.30	5.85	
	4   Tc	(°C)			42.1	44.4	46.9	49.4	52.0	54.7	
<b>43</b>	1   P frigorifique	(Watt)				1054	1283				
	2   P absorbée	(W)				841	950				
	3   I absorbée	(A)				4.03	4.53				
	4   Tc	(°C)				53.3	55.5				

<b>50 Hz R449A (*)</b>											
											<b>N°6222</b>
5   T ambience	6   T évaporation	(°C)	<b>-25</b>	<b>-20</b>	<b>-15</b>	<b>-10</b>	<b>-5</b>	<b>0</b>	<b>5</b>	<b>10</b>	<b>15</b>
<b>25</b>	1   P frigorifique	(Watt)		917	1156	1423	1717	2038	2384	2754	3145
	2   P absorbée	(W)		626	700	780	866	959	1060	1169	1287
	3   I absorbée	(A)		3.06	3.39	3.75	4.15	4.58	5.06	5.58	6.14
	4   Tc	(°C)		34.1	36.4	38.8	41.4	44.0	46.8	49.6	52.6
<b>32</b>	1   P frigorifique	(Watt)			1033	1279	1547	1839	2152	2487	
	2   P absorbée	(W)			719	807	901	1003	1113	1231	
	3   I absorbée	(A)			3.46	3.87	4.31	4.78	5.30	5.85	
	4   Tc	(°C)			42.1	44.4	46.8	49.3	51.9	54.7	
<b>43</b>	1   P frigorifique	(Watt)				1054	1284				
	2   P absorbée	(W)				841	950				
	3   I absorbée	(A)				4.03	4.53				
	4   Tc	(°C)				53.3	55.4				

**1 = cooling capacity 2 = power input 3 = current 4 = condensing temperature 5 = ambient temperature 6 = evaporating temperature**

(\*) Veuillez vous référer strictement aux Recommandations d'Utilisation et Bulletins Marketing Tecumseh du fait de la température de reflux élevée pour les applications LBP.  
 (\*) Due to very high discharge temperature especially on LBP conditions, please strictly refer to Tecumseh Guidelines & Marketing Bulletin when using this refrigerant.

**Nota : Tecumseh se réserve le droit de modifier les informations contenues dans ce document sans préavis.**  
**Note : Tecumseh reserves the right to change information contained in this document without notification.**

© 2021 Tecumseh Products Company  
All rights reserved